

Future-proof your business. Invest in nature.

Your success is dependent upon environmental sustainability. Take the lead. Change the way you landscape your property. Your future bottom line will thank you.

greening**corporate**grounds



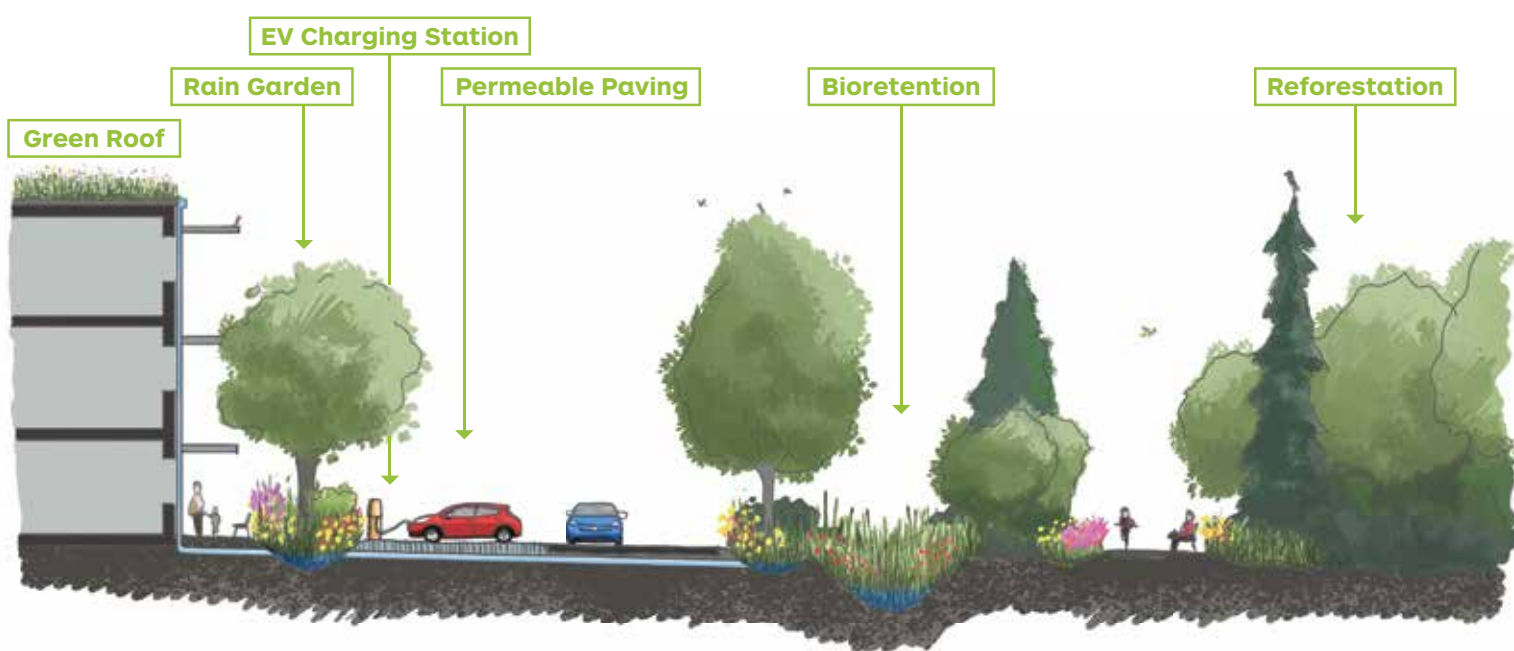
Leading the Way

Join **greeningcorporategrounds** (GCG) to lead the way with sustainable landscaping solutions on your property. Whether you're looking to plant trees or repave a parking lot, you have the power to protect the environment and our water supply through your membership.

Since 2009, GCG has been helping businesses build resilience and create long-term social and environmental value with sustainable landscaping.

We create sustainable landscaping plans for properties of any size that reflect your company's vision and bottom line, then help you bring the plan to life.

When you become a member of GCG, you join a growing community of forward-thinking business leaders like CRH Canada Group, HP Canada, Mitutoyo Canada Inc. and others gaining recognition for their actions toward a more sustainable future.



How the Program Works

When you become a member of GCG, you make a pledge to adopt sustainable landscaping practices on your property. In return, you gain access to expert advice and a suite of services that help you design, implement and maintain your sustainable landscaping vision.

We will invite you to take part in educational events and promotional opportunities to help you achieve your sustainability goals and ensure your business gets recognition for improving the health of our environment.

Sustainable landscaping is a long-term investment that can provide lasting returns for your business and community over time.

Timelines for projects vary, averaging one to three years depending on their size and complexity. We offer support and additional services to our members to help ensure ongoing success.

For your part, you'll develop a budget, purchase materials, hire contractors or supply personnel, and commit to maintaining your projects.



Lake Ontario Flyway Habitat Project, CRH Canada

Become a Leader in Sustainability

Sustainability gives your business a long-term competitive advantage. Businesses that invest in sustainability build brand value and reputation. This provides greater opportunities for:

- increased pricing power and customer loyalty
- improved employee health and retention
- increased attractiveness to new talent

“ The Greening Corporate Grounds program proved invaluable for the support and guidance it provided us in implementing our sustainable landscaping projects. ”

Frances Edmonds,
Head of Sustainable Impact, HP Canada

Why Sustainable Landscaping?

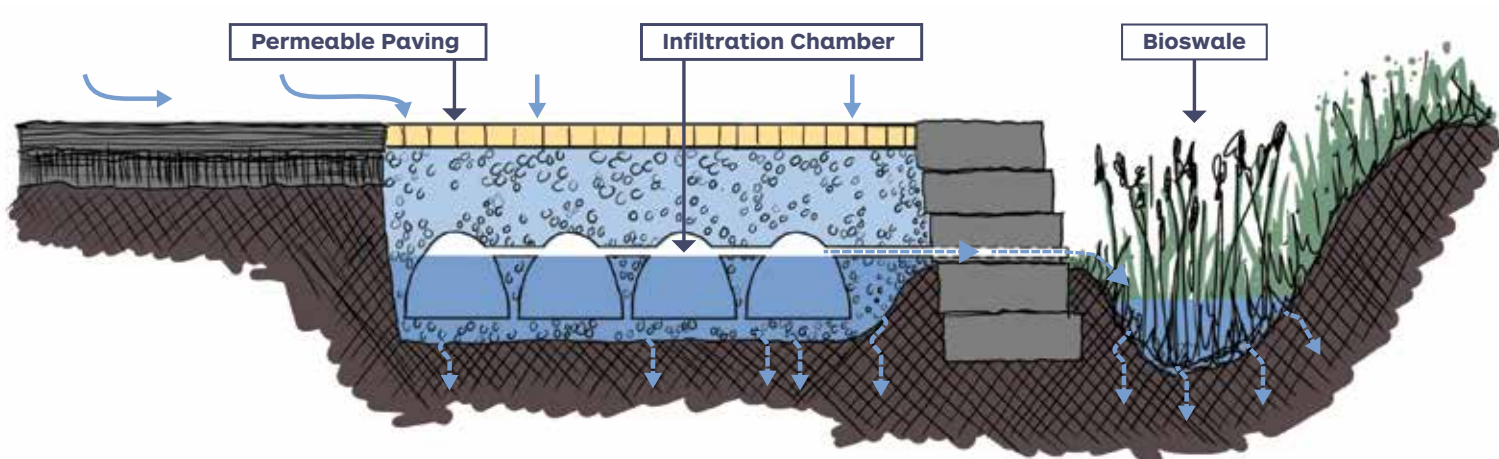
Sustainable landscaping is the process of applying ecologically beneficial landscaping practices to properties. These include planting native species, reducing conventional lawn cover or managing stormwater to prevent flooding. In Mississauga, these actions could help you reduce your stormwater charge by slowing your property's peak stormwater flows, decreasing run-off volumes and preventing pollution. If you're located in Mississauga within the Credit River Watershed, you receive membership benefits plus up to \$5,000 worth of design services for free when you enroll in GCG.

Mississauga Stormwater Charge and Credit

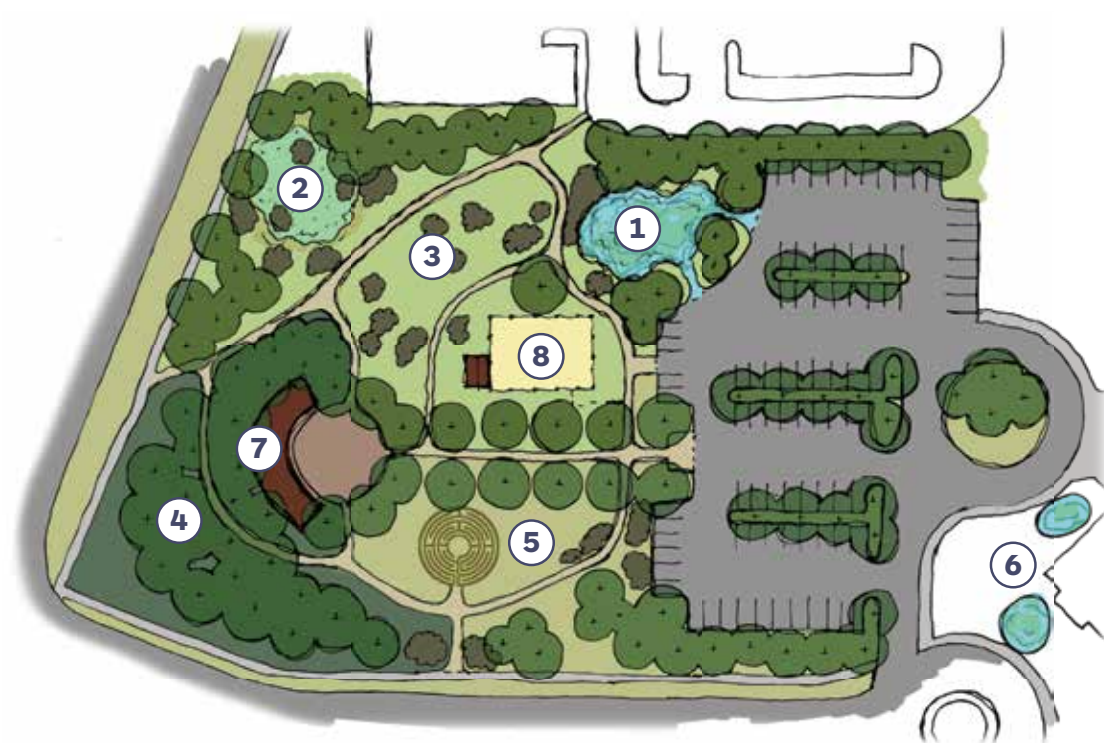
Institutional, commercial and industrial lands make up 70 per cent of hard surfaces in the City of Mississauga. Since 2016, a stormwater charge has been applied to Region of Peel water bills to establish a dedicated source of funding for Mississauga's Stormwater Management Program.

The Stormwater Credit Program gives multi-residential and non-residential property owners or tenants the opportunity to reduce their stormwater charge when they implement and maintain stormwater management practices on their properties.

Parking Lot Stormwater Management Solutions



From Vision to Implementation



Sample Concept Plan

- ① Retention Pond
- ② Detention Pond
- ③ Meadow
- ④ Woodland
- ⑤ Prairie Meadow
- ⑥ Rain Gardens
- ⑦ Wildlife Centre
- ⑧ Community Garden

“ GCG has the expertise to design and support implementation. They also have the resources to help secure funding and engage stakeholders and the community. ”

Kevin Mitchell, Director Property, Planning and Approvals, CRH Canada Group Inc.

Ready to Lead?

Do you know someone who would benefit from this program?

Make a referral and receive a Credit Valley Conservation parks membership (valued at \$135) to share within your company or organization.

cvc.ca/gcgreferral

Attend an event

We host educational events throughout the year. Subscribe to our newsletter for more information about events near you.

cvc.ca/gcgnewsletter

Contact us today for a free consultation:

905-670-1615 or 1-800-668-5557 ext. 439
gcg@cvc.ca



Pollution Prevention: It's Just Good Business



Preventing pollution on your property is an easy way to protect the environment and your future bottom line. The City of Mississauga has a dedicated coordinator responsible for upholding the Storm Sewer By-Law (#259-05). For information about how the bylaw affects your business, contact Environmental Services at Env.Inquiries@mississauga.ca or call 3-1-1 (905-615-4311 outside the City).

